

JEWELLERY STORAGE AND WATCH WINDERS 2017



GUNTHER MELE 1857
PACKAGING EXPERTS FOR OVER 160 YEARS

GUNTHERMELE.COM

Celebrating 160 years

of supplying beautiful jewellery storage.



MADISON BURKE DESIGNS™



Mercedes by Madison Burke.
See page 4



Noah by Madison Burke
See page 6



Phoenix by Madison Burke
See page 12

Our premier collection of jewellery storage boxes - Madison Burke Designs, features unrivaled craftsmanship and the finest of materials.

Attention is paid to the details. Each style is constructed of exotic veneers, upgraded hardware, and superb quality linings.

For some styles, hand-crafted authentic wooden inlays result in a storage box that is as much functional as it is a unique piece of art.

Your jewellery deserves to be stored in a special jewellery storage box. Madison Burke Designs, represents the quality and craftsmanship your keepsakes deserve.

Table of Contents

Madison Burke.....	4	Youth	24
Watch Winders	8	Girls	26
Watch Storage	11	Barbie™	27
Mens	14	Fashion and Travel	28
Armoires	15		
Womens	16		

Madison Burke Designs



Mercedes by Madison Burke 83772320

Better jewellery demands better storage. This exquisite jewellery case features a rich, matte finish, ebony veneer, accented by nickel hardware. Open the lid to reveal a sectioned, cream coloured velvet lined interior with rings pads, perfect for organizing smaller pieces. Three drawers, lock, and key complete this elegant jewellery box.

Size: 38 x 26 x 26.3 cm • Case Pack: 1

Suggested Retail: \$515.00

Mallory by Madison Burke 83694320

This elegant jewellery box will make a bold statement in any room. The high gloss finish, set against a bubinga veneer and soft velvet interior linings create a truly exquisite look. Open the lid to reveal a sectioned tray with built in ring pads. Keep chains tangle free; chain hooks are included in both the lid and swing out side doors. Three sectioned drawers provide additional room for larger pieces. Gold plated hardware, lock and key make this case a must have for storing finer jewellery.

Size: 32.4 x 22.2 x 25.4 cm • Case Pack: 2

Suggested Retail: \$515.00



Genevieve by Madison Burke

83439320

This beautifully crafted jewellery case features a rich cherry finish on poplar veneer. The soft velvet ivory linings will keep your jewellery damage free and looking great. A sectioned interior beneath the lid will keep beads and smaller pieces organized, while the included ring pads keep rings safe and sparkling. Store your necklaces tangle free in the lid; built in chain hooks and storage pouch are designed specifically for chains. Three drawers, lock and key complete this elegant jewellery box.

Size: 32 x 24 x 22.5 cm • Case Pack: 2

Suggested Retail: \$385.00



Madison Burke Designs



Melina by Madison Burke

83072320

This beautiful walnut jewellery organizer was designed with fine jewellery in mind. The rich walnut matte veneer finish is accented by a gold coloured drawer pull, lock and key. Open the sectioned lid to reveal a plush cream coloured cloth velvet lining. Sectioned compartments provide storage for smaller pieces, such as earrings, while two covered compartments keep larger pieces securely in place. The generously sized lower drawer provides ample room for larger pieces and accessories. The mirrored centre lid lets you admire your favourite pieces.

Size: 30.5 x 23.5 x 12.2 cm • Case Pack: 4

Suggested Retail: \$385.00



Madison Burke Designs



The Anniversary Case

by Madison Burke

83052320

Celebrating the best of milestones - this box was designed to celebrate Gunther Mele's 150th Anniversary and is special in every detail! Perfect for all occasions when only the best will do, the rich burl wood veneers and inlay design are enhanced by luxurious linings, quality hardware and true craftsmanship. Lock and key.

Size: 32.6 x 22.6 x 14.3 cm • Case Pack: 4

Suggested Retail: \$385.00

Noah by Madison Burke

83075320

This gorgeous jewellery case is a beautiful accent to any dresser top. The matte finish, ebony veneer exterior is complimented by a high quality, velvet lined interior. The case's slim design has room for your entire collection. Four watch compartments with pillows keep time pieces scratch and damage free. A removable tray keeps bracelets and other larger pieces organized and easily accessible. Keep your smaller jewellery, such as charms and beads, in the sectioned lower compartment. Ring rolls provide additional storage and keep rings upright and secure. Shiny nickel hardware completes this stunning jewellery box.

Size: 28 x 21 x 9 cm • Case Pack: 6

Suggested Retail: \$195.00



Talia by Madison Burke

83808320

Fine jewellery calls for the finest storage. This elegant musical jewellery case features a high gloss finish, accented by walnut burl. The floral design on the lid adds a touch of elegance as you open this exquisite case. Made of the highest quality velvet, the interior lining will keep even the most delicate jewels scratch and damage free. A removable sectioned tray with ring rolls will keep your rings and other smaller pieces organized, without worry of scratching or damage. A 22 note musical movement plays the theme from "The Celebrated Canon", as you admire your favourite jewellery. Hidden quadrant hinges, lock and key complete what might be the finest jewellery box you will ever purchase.

Size: 34 x 21.7 x 15 cm • Case Pack: 4

Suggested Retail: \$625.00



Rassa by Madison Burke

71261320

Quality jewellery calls for premium storage. This elegant Octagonal musical jewellery case features a high gloss walnut finish. Made of the highest quality soft ivory velvet lining, that will keep even the most delicate jewels scratch and damage free. The sectioned ring rolls and pull drawer with a secret compartment will keep your rings and other smaller pieces organized. The melody plays when the lower drawer is pulled open.

Size: 20.5 x 20.5 x 13 cm • Case Pack: 8

Suggested Retail: \$205.00



WATCH WINDERS

NEW



Langdon by Madison Burke
83012015

Keep up to four of your automatic timepieces elegantly protected and wound for use anytime. The high gloss black exterior is paired with a supple black leatherette interior lining. The large watch cuffs will accommodate oversized watch dials and bracelets. Dual Japanese motors will ensure your finest watches are ready to wear. Chromed compass style hinges and working lock and key, accent the quality construction. 110V adapter and battery back-up.

Size: 43.5 x 18.5 x 21 cm • Case Pack: 2

Suggested Retail: \$570.00

Turns Per Day switch added to allow additional programming for your watch type. (TPD = 650 - 1950)

Auto switch off - switch on to automatically stop the winding mechanism when the lid is lifted allowing for easy removal of your watches.



NEW &
IMPROVED

Gustava by Madison Burke 83821011

Form meets function in this combination watch winder and storage box. The high gloss black carbon fibre finish is complimented by a carbon fibre leatherette interior lining and silver tone hardware. The interior can accommodate up to five watches; one - or two - on the rotating winder cuff and three on the included watch pillows. The sloped lid design leaves plenty of room for large faced watches. This winder can be powered with the included 110V AC adapter or battery back-up. Functioning lock and key.

Size: 19 x 26.3 x 21.5 cm • Case Pack: 1

Suggested Retail: \$385.00

Turns Per Day switch added to allow additional programming for your watch type.
(TPD = 650 - 1950)

Auto switch off - switch on to automatically stop the winding mechanism when the lid is lifted allowing for easy removal of your watches.



Use two watch pads.



OR Use one watch pad.

WATCH WINDERS

NEW



Turns Per Day switch added to allow additional programming for your watch type.
(TPD = 650 - 1950)

Auto switch off - switch on to automatically stop the winding mechanism when the lid is lifted allowing for easy removal of your watches.

Reed by Madison Burke

83104089

This single automatic watch winder will store and display your watch in finest fashion. The high gloss, dark grey finish, accented by silver tone hardware, creates a striking yet classic look. A black leatherette lining encases the precision Japanese motor. The pillow rotator cuff will hold even the most delicate of time pieces securely in place without damage. This winder can be powered with the included 110V AC adapter or battery back-up.

Size: 14.5 x 15.5 x 18 cm • Case Pack: 4

Suggested Retail: \$295.00

NEW



Turns Per Day switch added to allow additional programming for your watch type.
(TPD = 650 - 1950)

Auto switch off - switch on to automatically stop the winding mechanism when the lid is lifted allowing for easy removal of your watches.

Peyton by Madison Burke

83101015

Keep your watches wound and ready to wear in this sleek, automatic watch winder. Black piano finish with a supple black interior accented by bright nickel hardware and knobs. Two independent Japanese motors with Turns-per-day (TPD) selector will keep a wide range of watches properly wound. This winder can be powered with the included 110V AC adapter or included battery back up.

Size: 24 x 16 x 18 cm • Case Pack: 4

Suggested Retail: \$385.00

The Link Collection

by Madison Burke

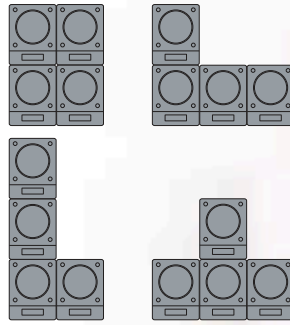
83082015 All Black

83082089 Black with Chrome

The Link Modular Watch Winder Collection harnesses the power source of one watch winder to run up to three additional units. There are four possible configurations for a maximum of four watch winders. For those starting their collection of fine watches, each unit can run on its own with the provided individual AC adapter. The modern, contemporary styling of these units will ensure that your favourite timepieces are wound and ready to wear when you are. A clear acrylic cover protects your watches from damage. There are four timer programs and each unit includes an 110V AC adapter. Two finishes are available - all black and black with chrome accents.

Size: 10 x 14.7 x 12.8 cm • Case Pack: 4

Suggested Retail: \$180.00 each



Four different configurations.
Maximum 4 units.



WATCH WINDERS AND STORAGE



Aidan

by Madison Burke

83180015

When only the finest will do, trust Aidan with up to ten of your favourite timepieces. Made with finer watches in mind, this ebony, high gloss finish watch box will organize and present your favourite pieces. Ten plush watch pillows will hold your watches in place and without damage. Lock and key security.

Size: 31.8 x 22.8 x 11.7 cm • Case Pack: 4

Suggested Retail: \$285.00



WATCH STORAGE



Phoenix

by Madison Burke

83170320

This beautiful watch storage case will be an excellent addition to your jewellery storage needs. With an ebony veneer matte finish and bevelled glass lid, soft white cloth velvet linings and watch pillows, it conveys 'elegance'. It features quality shiny nickle hinges, lock and key with tassel. This watch storage case is ideal for men and women.

Size: 39.5 x 14.6 x 8.6 cm • Case Pack: 6

Suggested Retail: \$260.00



Isaac

71017015

Trust Isaac with up to ten of your finest time pieces. This attractive watch box features black leatherette accents and looks great on any dresser top. The windowed lift top lid opens to reveal a soft velveteen cloth lining. The plush watch pillows will hold your watches securely in place, without worry of damage or scratching. A lower drawer provides room for other accessories, such as cuff links and money clips. Silver tone hardware completes the look of this sophisticated watch box.

Size: 29.8 x 20.3 x 12.1 cm • Case Pack: 4

Suggested Retail: \$115.00

NEW

Fred

71546320

This curved glass top watch box will store up to 5 of your most valued timepieces. A dark java wood finish is complimented by a supple taupe interior with five padded watch rolls. A functioning lock and key completes the look and adds a level of security.

Size: 28.5 x 11.4 x 8.6 cm • Case Pack: 8

Suggested Retail: \$70.00

*Logan*

71547340

Store up to five watches in this java finish watch box. The soft grey interior with matching plush watch pillows will keep your favourite watches scratch free. A padded, bevelled lid adds an intriguing design element to this simple yet attractive box.

Size: 28.6 x 11.8 x 7.9 cm • Case Pack: 12

Suggested Retail: \$60.00



MENS



Sawyer

71595340

Whether heading out the door or winding down for the day, this versatile men's valet will keep you organized. Open the windowed lift top lid to reveal storage for four watches on individual pillows and a change scoop. The grey velvet interior will hold your jewellery pieces securely in place, scratch free.

Size: 31.1 x 22.9 x 14.6 cm • Case Pack: 4

Suggested Retail: \$95.00

NEW



Rex

71546000

Grained oak men's valet with simple lines keeps everything easily at hand. Charge your smart phone by feeding your charging cable into the rear cut out. Easily keep change in its place or access rings and cuff links from the lined storage rolls dividing the top sections. The slide out drawer is large enough for sunglasses, bracelets and other keepsakes.

Size: 27.7 x 19 x 9 cm • Case Pack: 4

Suggested Retail: \$90.00

Adele 83179340 - Java

Farryn 83179000 - White

Compact armoires are perfect for smaller spaces, guest rooms, or dressing areas. These armoires feature Jewel-Protect™ linings, which inhibit jewellery tarnishing. The mirrored, lift top lid opens to reveal a sectioned compartment and ring rolls. Three generously sized drawers provide ample room for storing larger accessories such as scarves. Pearl style hardware provides a final touch of elegance to these great armoires.

Size: 33 x 24 x 79.7 cm • Case Pack: 1

Suggested Retail: \$195.00



WOMEN'S



Jasmine

77917340



Jewel-Protect™
tarnish inhibiting lining.

An attractive addition to any dresser top, this jewellery case features a graceful rounded shape, rich java finish, brushed silver tone hardware and inlaid mirror. Five drawers, swing out sides with chain hooks, and a sectioned upper tray make this case fun and functional!

Size: 33 x 15.9 x 34 cm • Case Pack: 2

Suggested Retail: \$195.00



Natasha

71069340

This java finish jewellery case is perfect for storing your jewellery in style. Open the lift top lid to reveal a sectioned top tray, ideal for storing smaller pieces and beads. Two front doors with chain hooks and storage pouches open to reveal two small and three large drawers, perfect for organizing your bracelets, necklaces and other larger pieces. Silver tone hardware and beige interior accents the rich java finish creating a simple but refined look.

Size: 27 x 19 x 31 cm • Case Pack: 2

Suggested Retail: \$155.00

Cadence

71434320

This upright burnished oak storage box holds your jewellery collection with ease. 4 drawers with various dividers affords the ultimate flexibility. Concealed side storage compartments allow for ample chain storage. The full-mirrored lift top section features ring rolls and small dividers for easy access to your daily worn pieces.

Size: 31.1 x 17.1 x 29.2 cm • Case Pack: 4

Suggested Retail: \$140.00



Kendall

77242340

Keep your entire jewellery collection safe and secure in this beautiful compact armoire. The rich java finish, set against a soft, beige interior creates a striking, yet elegant look. Open the mirrored lid to reveal a sectioned tray with ring pads. Three drawers provide additional space for larger pieces such as bracelets, bangles and brooches. Two swing out side doors allow you to store chains, necklaces and pendants tangle free. Pewter hardware and contoured edges add a final touch of elegance to this contemporary styled jewellery case.

Size: 24.8 x 14.9 x 23.5 cm • Case Pack: 4

Suggested Retail: \$95.00



WOMEN'S



Kennedy

71606300

This cherry wood grained lift top box is complemented by a soft beige interior lining. The glass lid opens to a spacious upper compartment, highlighted by a removable ring roll and smaller sections for chains and bracelets. The lower drawer accommodates those larger pieces. This jewellery box features satin nickel hardware and a lock and key.

Size: 26 x 19.1 x 16.8 cm • Case Pack: 4

Suggested Retail: \$140.00



Lauren

71158340

Compact one drawer jewellery box features a mirrored inlaid design lid. Open the lid to an upper compartment that features a large ring roll and two smaller compartments. The lower drawer will safeguard bracelets or chains. The exterior java finish is complemented by an ivory interior and satin nickel hardware.

Size: 17.8 x 14 x 10.8 cm • Case Pack: 8

Suggested Retail: \$50.00

Portia

71435320

This classic java jewellery box integrates perfectly into any decor. This small but elegant storage box is perfect for your daily usage with a sectioned lift out tray and spacious under section for larger pieces. Features an oval inset mirror and functioning lock and key.

Size: 21 x 15.9 x 11.4 cm • Case Pack: 12

Suggested Retail: \$70.00



Evelyn



Jewel-Protect™
tarnish inhibiting lining.

71495320

Fitted with Jewel-Protect™ tarnish inhibiting linings, this petite jewellery organizer features swing out side doors with chain hooks for keeping chains and necklaces tangle free. Spacious drawers, a sectioned upper tray and a mirrored lid make this a must have jewellery case. The java finish beautifully accents any room.

Size: 34.3 x 20 x 21.6 cm • Case Pack: 2

Suggested Retail: \$125.00



WOMEN'S



Kelly

71301320

Designed with multiple types of jewellery in mind, this unique jewellery case features a cherry finish and soft beige interior lining. The windowed lid opens to reveal a sectioned upper compartment perfect for beads and charms, with ample ring rolls. Two additional sectioned drawers provide storage for necklaces, chains, and larger pieces. Silver tone hardware completes this fun and functional case.

Size: 26.7 x 24 x 15.6 cm • Case Pack: 2

Suggested Retail: \$125.00



Memory Keepsake

61763340

Preserve your favourite memories and moments in this gorgeous, book style, keepsake box. Ideal for weddings, birthdays, and life's other important moments. This keepsake box features a dark, cherry finish set against a black interior. An engravable name plate on the lid allows you to make this keepsake box truly your own.

Size: 30 x 26.7 x 10 cm • Case Pack: 4

Suggested Retail: \$90.00

Cassidy

61606089

Eclectic glass and metal trimmed jewellery box, features a clear lid and sides which provides visibility to your favourite pieces at a glance. Upper compartment includes a ring roll and sections for smaller jewellery pieces. The bottom drawer opens to a large compartment that will accommodate larger bracelets and necklaces. The combination of glass and antique brass exterior and beige linen interior, creates a contemporary jewellery box that can be displayed in any room.

Size: 25.1 x 20 x 11.4 cm • Case Pack: 2

Suggested Retail: \$130.00



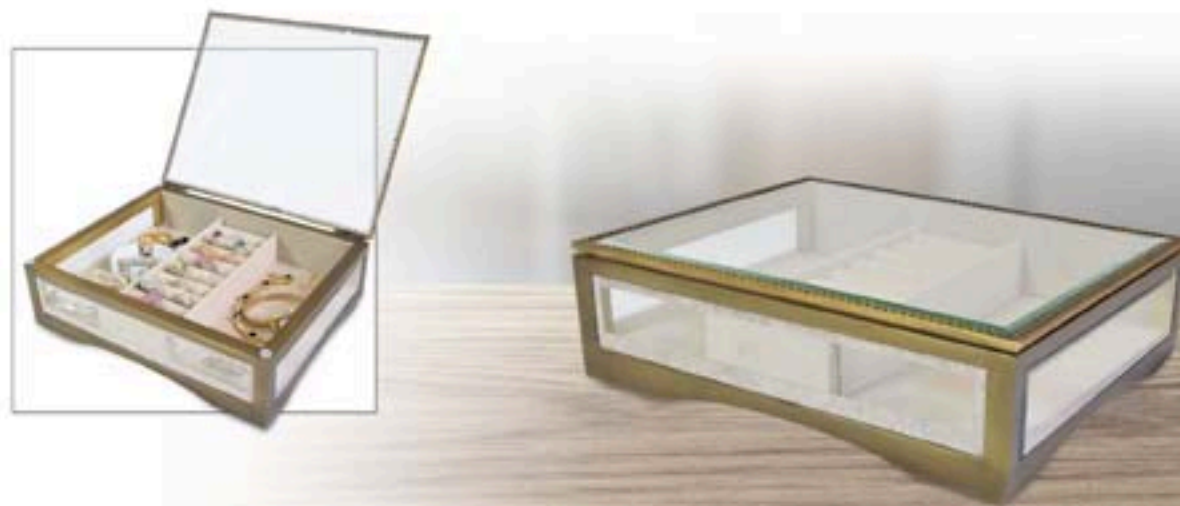
Chloe

61606989

This compact contemporary jewellery box, includes the glass and antique brass elements of the larger version "Cassidy". The glass lid opens to a ring roll and two sections which will accommodate your favourite jewellery pieces. This jewellery box is completed with a linen interior.

Size: 20 x 16.5 x 8 cm • Case Pack: 4

Suggested Retail: \$75.00



WOMEN'S



Kayla

61905089

Elegant and contemporary this full mirrored box features an ornamental lift. Open the lid to a contrasting teal interior. A lift out upper tray features five smaller compartments. The lower compartment provides storage for larger pieces. This jewellery storage box will compliment any room in your home.

Size: 22 x 17 x 12.5 cm • Case Pack: 6

Suggested Retail: \$65.00



Claire

61904089

A smaller in size complimentary style to Kayla, this elegant and contemporary full mirrored box features an ornamental lift. Open the lid to a contrasting teal interior. A lift out upper tray features five smaller compartments. The lower compartment provides storage for larger pieces. This jewellery storage box will compliment any room in your home.

Size: 17 x 14 x 8.5 cm • Case Pack: 12

Suggested Retail: \$45.00

Lili

71063000

Elegant and modern, this jewellery storage case has a satin finish accented by a glass lift top and interior beige linen lining. This organizer features ring a roll and many sections to protect your jewellery from scratches and damage. It features a large bottom drawer for larger pieces. Key and lock.

Size: 28.7 x 22.5 x 14 cm • Case Pack: 2

Suggested Retail: \$95.00



Victoria

71436320

As her jewellery collection grows, so should her jewellery box. This white finish lift top jewellery case is perfect for keeping a growing collection safe and organized. The lattice top opens to reveal an elegant taupe lining. Two lower drawers provide storage for larger pieces.

Size: 30.5 x 20.3 x 15.6 cm • Case Pack: 2

Suggested Retail: \$130.00



NEW

YOUTH



Mia

71015000

Contemporary and functional, this jewellery box includes storage for up to six watches, and your precious pieces. The curved lid opens to a full mirror and an upper compartment that accommodates watches or bracelets. The lower drawer includes a ring roll and three compartments. The ivory exterior finish is complemented by the bright fuchsia interior lining and satin nickel hardware.

Size: 19 x 19.7 x 14 cm • Case Pack: 4

Suggested Retail: \$90.00



Alexia

71544000

This white finish, two drawer jewellery box is perfect for safely storing trinkets and treasures. The lift top lid includes four uniquely shaped photo frames for remembering those special moments, along with a mirror for admiring your favourite pieces. The sectioned upper compartment features a fun, polka dot fabric lining. Ring rolls, and sectioned compartments provide plenty of room for all your jewellery. Two lower drawers provide space for hair clips and other larger pieces. Unique glass style drawer pulls, lock and key with tassel complete this fun jewellery box.

Size: 24.8 x 15.9 x 14 cm • Case Pack: 4

Suggested Retail: \$95.00

Katie

71627000

This compact and fun wooden jewellery box is perfect for holding her first treasures and trinkets. The white painted finish is accented by a warm pink trim. A ballerina twirls to the tune of: "Swan Lake" as you open the mirrored lid. The soft pink interior lining adds an extra touch of fun while keeping jewellery free of scratches and damage. Ring rolls keep rings upright and easily accessible. A lower drawer provides room for larger pieces.

Size: 18.4 x 13.3 x 12 cm • Case Pack: 12

Suggested Retail: \$60.00



Eva

77555000

The floral petal designed graphics on exterior makes this musical jewellery case appealing to little girls. The one clear door opens to a rotating necklace carousel for your necklaces to hang tangle-free! The three drawers can hold earrings, necklaces and bracelets. The lift lid opens to a mirror and revolving ballerina figurine and more storage. Plays: "Swan Lake".

Size: 20.9 x 13 x 22.1 cm • Case Pack: 6

Suggested Retail: \$55.00



GIRLS



Emily

77750000

This octagonal ballerina themed jewellery box features a ballerina figurine that twirls to "Swan Lake". The lid features an interior mirror and the soft pink lining compliments the ballerina design on the exterior. The inside includes a ring and earring roll, and sectioned compartments for her precious pieces.

Size: 13.6 x 13.6 x 8.2 cm • Case Pack: 24

Suggested Retail: \$30.00



Maddy

77397000

This musical, heart shaped jewellery box features butterfly themed exterior graphics. A ballerina figurine dances to 'Over The Rainbow' as you open the lid. Admire your favourite pieces in the heart shaped mirror. The upper storage compartment and bottom drawer provides plenty of space for all her jewellery and keepsakes.

Size: 19 x 16.3 x 8 cm • Case Pack: 12

Suggested Retail: \$30.00

NEW

Sophia

71124000

This musical jewellery box features a fun ballerina and flower graphic design. Pink flocked interior lining completes this fun jewellery case. Open the mirrored lid to reveal a ballerina figurine twirling to the tune of 'Swan Lake'.

Size: 14.8 x 10.5 x 8.2 cm • Case Pack: 36

Suggested Retail: \$22.00



Barbie

66638000

Little girls will love to keep their treasures and trinkets in this fun, Barbie™ "Sleep Over" themed jewellery box. A "Live, love, laugh & dream" graphic with Barbie and her friends adorns the lid while heart patterns flow around the sides of the case. As you open the mirrored lid, a sectioned drawer automatically reveals itself. A sectioned upper tray with a rising shelf keeps jewellery neatly organized and ready to wear. A heart shaped picture of Barbie™ and her friends turn to the tune of: "You've Got A Friend."

Size: 21 x 14 x 8.9 cm • Case Pack: 12

Suggested Retail: \$34.00



NEW

Barbie is a trademark owned by and used under license from Mattel, Inc. © 2017 Mattel, Inc. All Rights Reserved.



Austin

61876012

Compact and portable this brown leatherette exterior watch case can hold between 3-5 of your favourite time pieces. The domed closure cover opens to a soft grey interior, and the cushioned inner roll, ensures that your watches are protected against unnecessary wear. This case is great for travel, when you may require an assortment of watches for your planned activities or wardrobe.

Size: 21 x 8.5 x 8.5 cm • Case Pack: 40

Suggested Retail: \$40.00



Eden

61410089

This compact travel jewellery case features an embossed metallic gray exterior with complimentary buckle strap closure and silver tone hardware. The mirrored lid opens to reveal the perfect jewellery storage combination of ring rolls and two compartments with lining covers. A spacious lower compartment provides room for larger pieces. A convenient carrying strap adds a final touch of fun to this great case.

Size: 20.3 x 15.6 x 10.2 cm • Case Pack: 6

Suggested Retail: \$68.00



Ainsley

61532015

Designed with beads and charms in mind, this jewellery case features a black leather exterior set against a soft black velvet interior lining. Open the lid to reveal a lift out top tray with 33 sections for beads and charms. A second sectioned and removable tray features 3 padded spaces for storing bracelets damage free. A lower, elongated, sectioned and removable tray holds chains and necklaces in place and tangle free. This jewellery box will keep your entire bead collection organized.

Size: 26 x 10 x 6 cm • Case Pack: 20

Suggested Retail: \$68.00



FASHION AND TRAVEL



Iris

61863090 Red

61863015 Black

Roll up your jewellery and take it with you. This croco jewellery roll unrolls to reveal a plush velvet lining. Inside the roll is storage for every type of jewellery. Ring rolls, earring holders, and necklace hooks keep your jewellery secure and damage free. Velcro closures ensure everything stays safely in place.

Size: 57 x 26.5 cm (open) • Case Pack: 40

Suggested Retail: \$46.00



Helene

61919027

Stay stylish on the road. This travel jewellery case features a striking lizard style exterior, and complimentary stitching with full inlaid mirror. Don't leave anything behind, this case includes multiple sized compartments for all types of jewellery. A removable, sectioned tray provides space for smaller pieces.

Size: 25 x 13 x 9 cm • Case Pack: 12

Suggested Retail: \$40.00

Marga

61512090 Red

Laura

61512015 Black

Keep your jewellery organized and safe on your next trip. This compact, travel sized jewellery case features a fun, lizard style exterior accented by a velvet cloth interior. Open the case to reveal a ring pad and individual compartments to hold your favourite pieces. Hidden behind the mirror is a soft velvet cloth pouch for keeping smaller pieces secure while on the go.

Size: 12.5 x 12.5 x 5.5 cm • Case Pack: 30

Suggested Retail: \$34.00



Fiona

61120012 Brown

Designed specifically for jewellery, these stylish and fun travel folders will keep your jewellery safe and secure while on the go. Rings and earrings are held securely in place by semi detachable bands. A zippered compartment and pouch keeps loose pieces in place and easily accessible. Available in red, black or brown, these travel jewel folders would make a great travel companion on your next trip.

Size: 28 x 22 cm (open) • Case Pack: 60

Suggested Retail: \$24.00



GUNTHER MELE 1857

TO PLACE AN ORDER

Call Customer Service: 519.756.4330

Toll Free: 1.888.486.8437

Order on line: gunthermele.com

Direct Fax: 519.756.4335 or contact your area sales representative ...

Sales Representatives:

British Columbia

DAVE McQUILLIN

Cell: 778.228.1554

Tel: 604.859.0747

Fax: 604.859.0716

Email: dmcquillin@gunthermele.com

Northern Ontario

IAN MACDONALD

Cell: 705.345.0324

Fax: 705.689.9932

Email: imacdonald@gunthermele.com

Rural Quebec & Gaspé

MICHEL LATERREUR

Cell: 819.479.5653

Tel: 819.474.1110

Fax: 819.474.2951

Email: mlaterre@cgocable.ca

Alberta

JULIE FRASER-FERGUSON

Tel: 519.805.4112

Fax: 519.756.4335

Email: jfraserguson@gunthermele.com

Toronto, Eastern & South Western Ontario

JIM TERESCHUK

Cell: 416.882.3346

Tel/Fax: 416.928.1656

Email: jimtereschuk@sympatico.ca

Maritimes

MARK AMYOT

Cell: 902.893.1209

Fax: 800.494.5447

Email: forefront@ns.sympatico.ca

Manitoba & Saskatchewan/Thunder Bay

TIM BENNER

Cell: 204.792.3062

Fax: 204.757.9484

Email: tbenner@gunthermele.com

Montreal & Western Quebec

MARIE TOUTONGI

Cell: 514.816.7683

Fax: 514.485.7684

Email: mtoutongi.pkg@videotron.ca

Newfoundland & Labrador

JILL PORTEOUS

Tel: 519.805.4312

Fax: 519.756.4335

Email: jillp@gunthermele.com

GUNTHER MELE LTD., 30 Craig Street, Brantford, Ontario N3R 7J1
Tel: 519.756.4330 Fax: 519.756.4335 Email: info@gunthermele.com

gunthermele.com

**CASE PACK
ORDERING
BONUS!**
SAVE 5%
on any style
when purchased
in a case pack!

* Cannot be combined with
other promotions and
is on approved credit only.

TERMS AND CONDITIONS:

- Minimum order \$250.00 cost
- Terms: Net 30 days
- 'F.O.B.' Brantford, Ontario
- Defective merchandise will be accepted for credit only if requested within 15 days of receipt of shipment.
- Authorization number for returns must be obtained from head office by calling: 1.888.486.8437
- In-transit damage is the responsibility of the carrier and claims must be processed by them.
- Shop-worn merchandise will not be accepted for credit.
- While we strive for accuracy in our catalogue, actual product may be slightly different than pictured.